



CON-SERV WATER RECOVERY SYSTEMS



CON-SERV Water Recovery Systems consists of two (2) independent pumping systems:

- **The Primary Micro Pore Filtration System**
- **The Ozone Re-Circulation System**

The **Primary Filtration Systems** consists of a high volume process pump, with an associated filtration array designed for maximum water quality while providing a high volume of wash water to be reused in professional carwash equipment.

The system is designed to receive wastewater collected from the wash sump/holding tank system and to process this water to remove all particulate matter of greater than twentyfive (25) micron, the size of a single white blood cell.

In addition, the filtration system is designed to remove oils, road film, and waxes which causes deterioration in overall recovered water quality.

The **Ozone Re-Circulation System** is operated independently of the filtration systems on a continuous basis to treat all water held in system storage tanks. The **Re-Circulation System** utilizes a patent injector system, which provides a 99% transfer rate of ozone to stored water.

The powerful **Ozone Re-Circulation System** de-emulsifies waxes, and removes dyes from solution, so they may be easily captured by the micro pore filtration system described above.

The ozone in the water also acts as an oxidizing agent to kill bacteria and algae by limiting organic build-up, which is commonly associated with odours found in reclaimed water.

After the wastewater has been treated by these two synergistic systems, the water will be of a quality ready to wash another vehicle.



Free Standing Combination Series III



- Self-cleaning stainless steel filter element
- 3 HP / 5 HP process pump with strainer basket
- Ballast Pressure Control - 35 / 60 fibrewoven tank
- 25u absolute filtered water quality*
- U/L listed electrical control system
- 3/4 HP ozone re-circulation pump
- *Includes Pump Guard advisor*
- Flow rates up to 100 GPM

* 25 Micron equals 0.001, the size of a single white blood cell

Available Options

- Additional 12 gram ozone modules
- **Enzyme** dosing control
- **Oxine** dosing control
- Stainless steel housing & separator

Lifetime Warranty on stainless steel filter elements
Standard 2 micron (.001 the size of a single white blood cell)
Stainless steel platform, components & fittings

Model	FS Comb Series III 3	FS Comb Series III 5
*Flow Rate	65 GPM	100 GPM
Height	52"	
Width	36"	
Depth	34"	
Weight	306.82 Kgs	329.55 Kgs
Input Power	208/230/480 3 Phase 60 Cycle	
Control Power	115 Volt 1 Phase 15 Amp Max	
Primary Pump	3.0 HP	5.0 HP
Full Load Amps	8.5/8.0/4.0	13.0/12.2/6.1
Secondary Pump	.75 HP @ 3.1 / 1.55 Full Load Amp	
Suction Inlet	2" NPT	3" NPT
Filtered Outlet	1.5" NPT	2" NPT
Ozone Outlet	1" NPT	
Discharge Outlet	3" NPT	
Ozone Output	12 grams / Hour	
Oxygen	24 SCFH / 30 SCFH	

* GPM Ratings may vary due to Piping Layout that may change Pump Head Curve

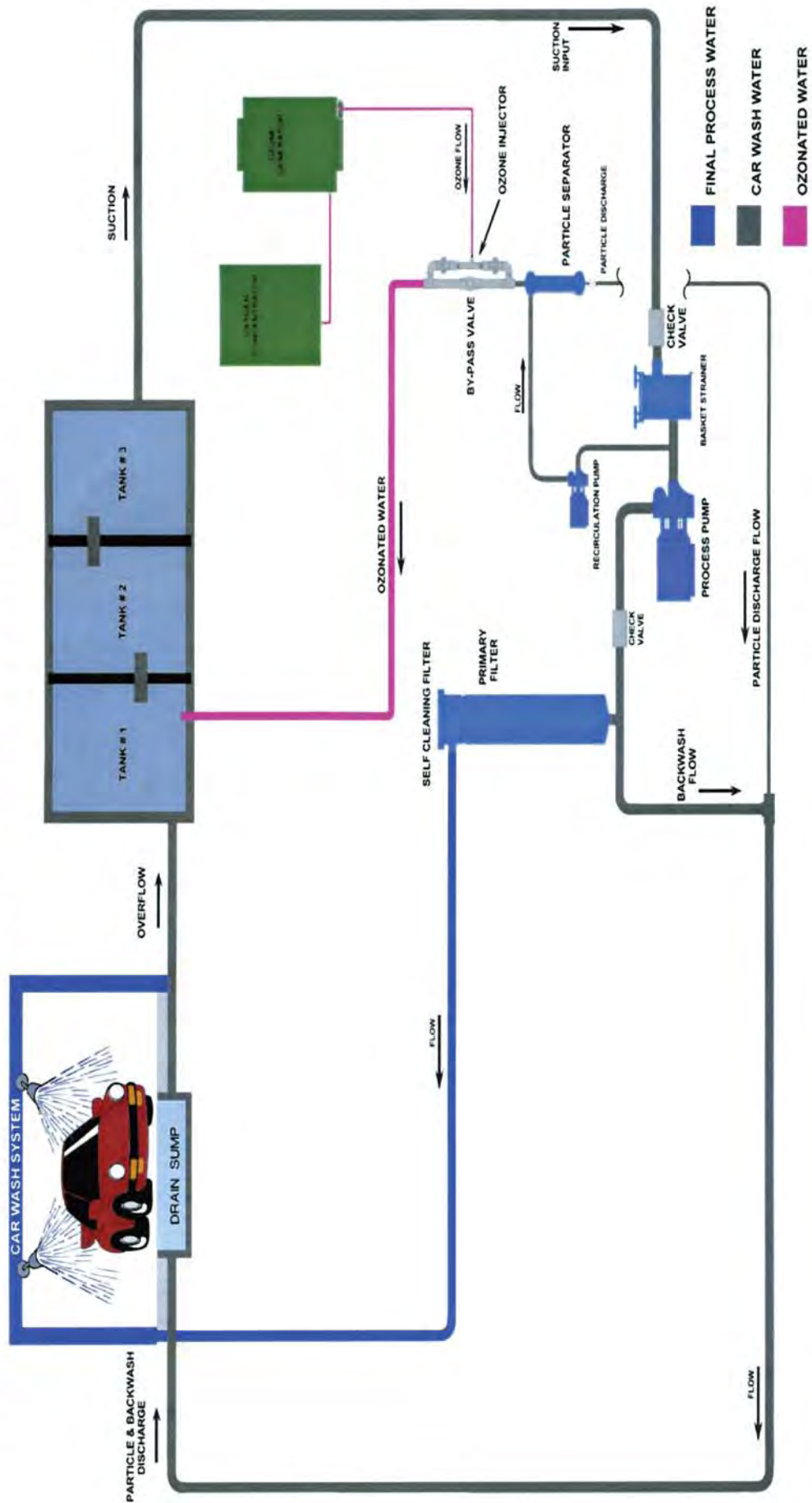


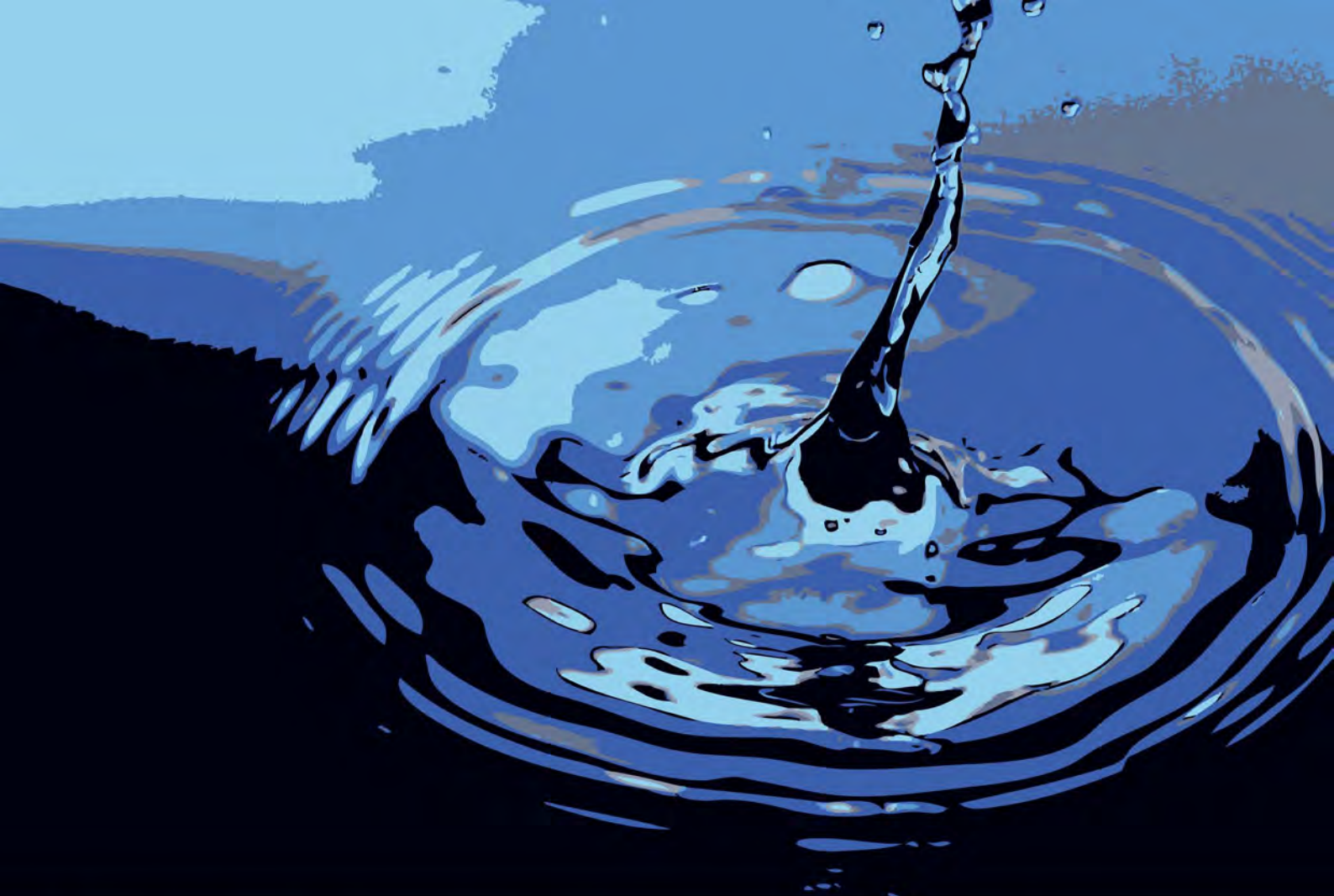
Back View
Inlets and Outlets



Front View
Oxygen Concentrator and
Ozone Generators

The CON-SERV Filtration Process





Con-Serv Manufacturing Water Usage Analysis

Application

Water Usage

<i>PDQ Laser 4000</i>	GPM of Nozzles	Number Nozzles	Cycle Duration % Minute	Cycle Speed	Consumed Litres	Type Code (F or R)*	Fresh Litres	Reclaim Litres
Under Carriage & Rocker	2.5	12	0.33		42.57	R	0	42.57
Presoak	0.2	10	0.3	7	2.58	F	2.58	0
Presoak	0.2	10	0.3	7	2.58	F	2.58	0
High Pressure Wash	3.5	10	0.5	5	75.25	R	0	75.25
High Pressure Wash	3.5	10	0.5	5	75.25	R	0	75.25
Low Pressure Wax	1	10	0.3	7	2.58	F	2.58	0
Final Rinse	3.5	10	0.2	9	30.1	F	30.1	0
Total Water Used per Car (Litres)					230.91		37.84	193.07

* Fresh or Reclaim



Carwash World Pty Limited
 Po Box 653 Castle Hill NSW 2153
 Phone: + 61 405 133 929
 Email: sales@carwashworld.com.au
 Website: www.carwashworld.com.au